



Equitable Place-Centered Strategies for Safer Communities

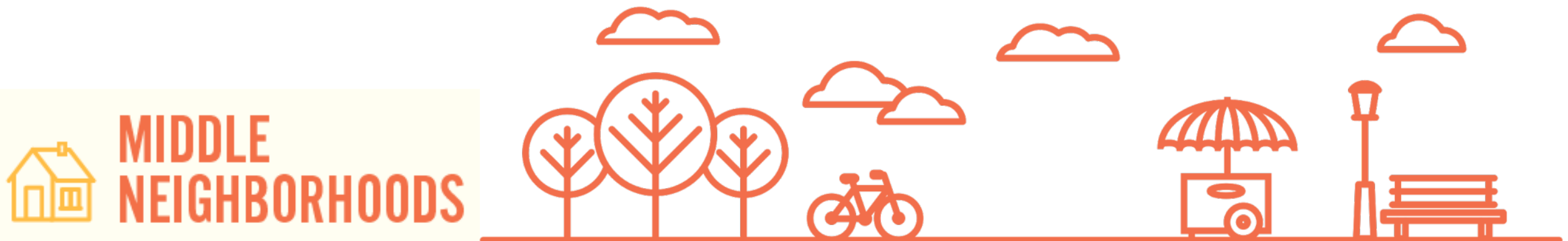
The National Middle Neighborhoods Community of Practice

Middle Neighborhoods Initiative

A **National Initiative** focused on mobilizing attention to reverse the disappearance of middle neighborhoods through decline or gentrification. The initiative does this through

- A **Community of Practice** that facilitates peer-to-peer learning among middle neighborhood practitioners. The CoP connects more than 400 practitioners, policymakers and researchers to each other through webinars, events, case studies, newsletters, and virtual site visits.
- **Research** into topics relevant to middle neighborhood practitioners and policymakers.
- **Policy analysis and advocacy** around housing, lending and other community development issues.
- **Communications** strategies to advance awareness and technical knowledge among a wide variety of audiences.

The initiative is coordinated by the **National Community Stabilization Trust** and **NeighborWorks America** and is advised by a **Steering Committee** of 20 prominent researchers, practitioners, and policy makers.



Panelists

Matt Perkins

- Program Director
- LISC
- Rockville, MD

Tom Wyatt

- Executive Director, Neighborhood Engagement Hub
- Principal, Connected by Design
- Flint, MI

Hilary Bass

- Sr. Program Specialist
- Alameda County Sheriff's Office
- Alameda County, CA

Charles Joe

- Lieutenant
- Alameda County Sheriff's Office
- Alameda County, CA

Martin Neideffer

- Captain
- Alameda County Sheriff's Office
- Alameda County, CA

Developing a Comprehensive Safety
Strategy for Middle Neighborhoods
August 23, 2022

LSC



About LISC

LISC's Reach

2,100 Partners

Our national network includes nonprofits, businesses and government agencies in both rural and metropolitan areas

3 National Affiliates

National Equity Fund

www.nefinc.org

New Markets Support Company

www.newmarkets.org

immito

www.immito.com

35 Office Locations

Atlanta, GA

Boston, MA

Buffalo, NY

Charlotte, NC

Chicago, IL

Cincinnati, OH

Denver, CO

Detroit, MI

Duluth, MN

Flint, MI

Greenville, SC

Hartford, CT

Honolulu, HI

Houston, TX

Indianapolis, IN

Jacksonville, FL

Kalamazoo, MI

Kansas City, MO

Los Angeles, CA

Milwaukee, WI

Minneapolis/
St. Paul, MN

New York, NY

Newark, NJ

Norfolk, VA

Oakland, CA

Peoria, IL

Philadelphia, PA

Phoenix, AZ

Providence, RI

Richmond, VA

San Antonio, TX

San Diego, CA

Seattle, WA

Toledo, OH

Washington, DC

Our Reach

100

Local Strategic Partnerships

AZ	Phoenix Tucson	IL	Chicago East St. Louis Springfield	MN	Minneapolis Little Earth of United Tribes	NY	Brooklyn Buffalo Rochester Syracuse	TN	Nashville
CA	Alameda County Corning Hayward Lompoc Los Angeles San Bernardino San Francisco	IN	Evansville Indianapolis	MO	Bowling Green Kansas City St. Louis	OH	Cleveland Dayton Highland County Toledo Youngstown	TX	Austin San Antonio
CT	Hartford New Haven Norwalk	KY	Berea	MS	Clarksdale Greenville Meridian	OK	Tulsa	VA	Richmond
CO	Denver Ute Mountain Ute Tribe	LA	Baton Rouge New Orleans Shreveport	NC	Durham	OR	Portland	WA	Seattle Spokane
DC	Washington	MA	Boston Chelsea Lowell Springfield Worcester	NE	Omaha	PA	Chester Erie Harrisburg Philadelphia	WI	Madison Milwaukee
FL	Fort Lauderdale Jacksonville Miami-Dade Tampa	MD	Baltimore Langley Park	NH	Laconia	RI	Providence	WV	Charleston Huntington
GA	Atlanta Albany Rockdale County	MI	Battle Creek Detroit Flint Kalamazoo	NJ	Newark Phillipsburg	SC	Lancaster		

Strategic Focus

Our work centers on three priorities at the intersection of places, people and systems.

TRANSFORMING PLACES

We empower neighbors to make their communities safe and just.

To do so, we:

- Help community-based organizations, residents and other stakeholders partner to advance resident-led efforts to bring peace and justice to their communities
- Build skills, commission research, and share tools and knowledge to help partners identify safety challenges, plan, and implement physical transformations and other evidence-based solutions
- Provide funding and identify resources to bring vacant and abandoned properties and derelict public spaces back to life as community assets

UPLIFTING PEOPLE

We invest in residents from all walks of life.

In this work, we:

- Support youth development programs that provide pathways to education, employment, and positive life outcomes and address the impacts of trauma
- Increase access to housing, employment, and educational opportunities for returning citizens and incarcerated individuals
- Deploy street outreach workers who are skilled at defusing violence and reaching vulnerable citizens

RESHAPING SYSTEMS

We fight for policies and practices that treat all people equitably.

This means we:

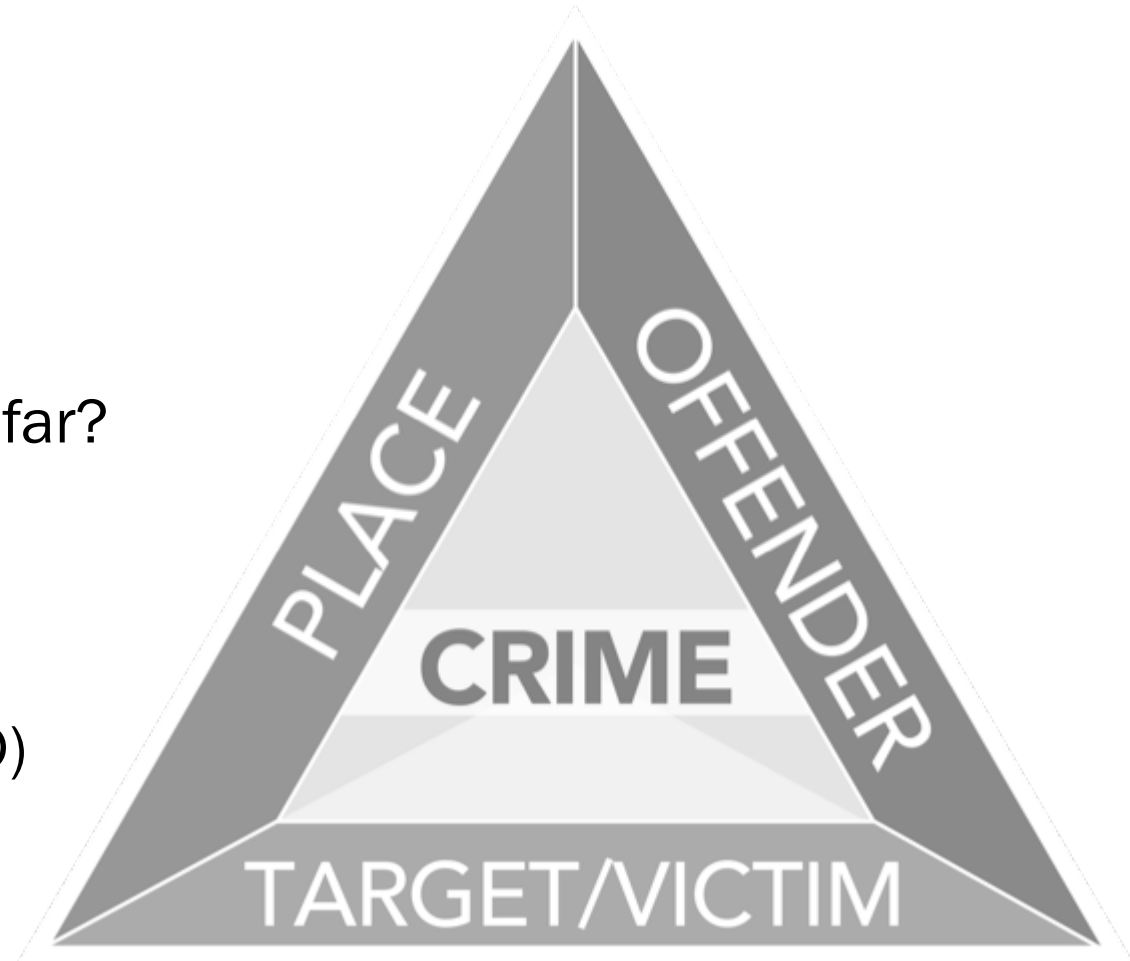
- Champion efforts to dismantle structural racism across the criminal justice continuum, from policing and courts to prison and post-release supervision
- Surface and support justice reform innovations, such as sentencing and bail reform
- Advocate for policies and practices that treat people equitably across systems including housing, employment and education

Understanding Place and Crime

Situational Crime Prevention

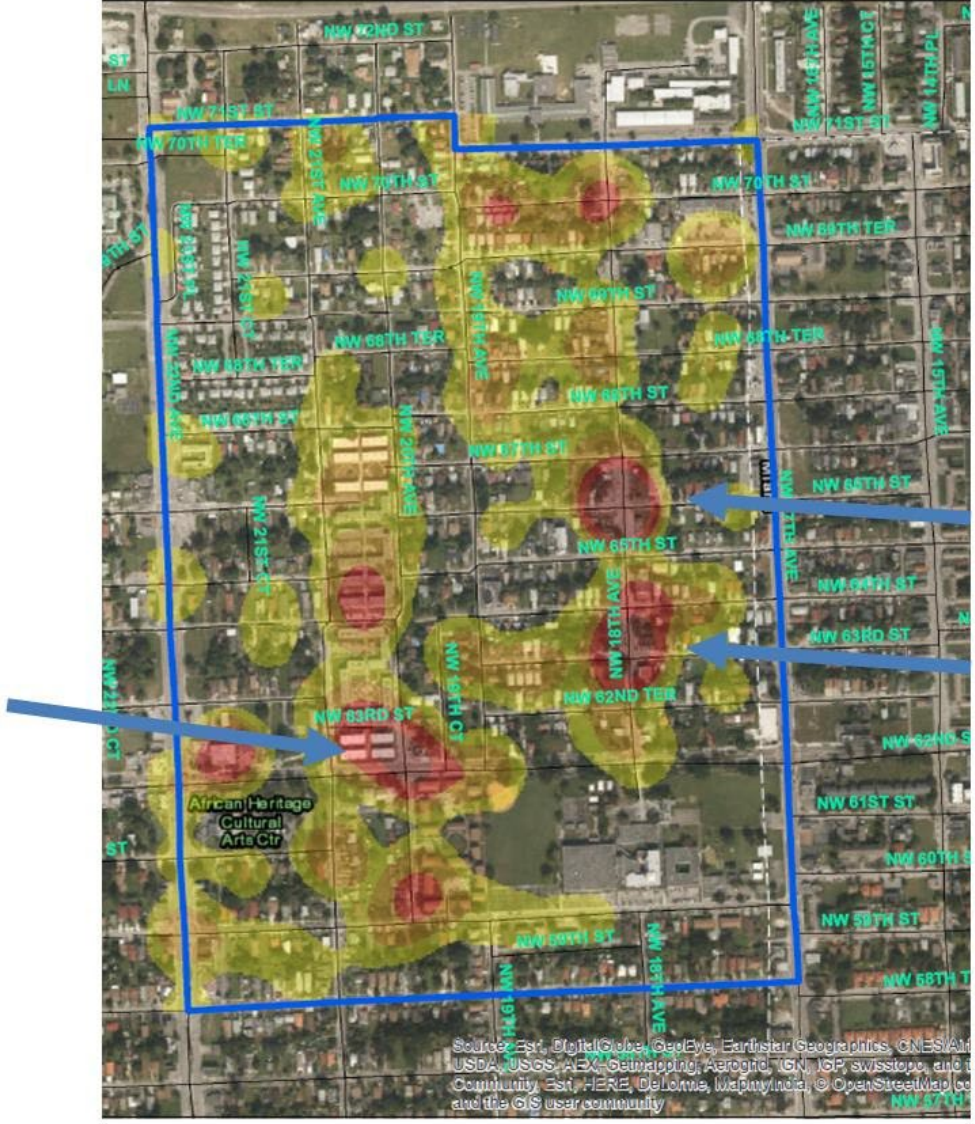
Importance of Place

- Myths of displacement
 - Proximal or distal/near or far?
- Diffusion of benefits
- Crime Prevention Through Environmental Design (CPTED)



Place and Crime: Liberty City Crime Mapping

Peace 3



Place and Crime

- [Law of crime concentration](#)
 - 80/20 rule
 - Co-location with other problems
- [Benefits of green spaces](#) (podcast link)
- [Greening lots reduces crime](#) – [Pennsylvania Horticultural Society](#)
- Patterns of crime [mimic the spread of infectious disease](#)
- Can [pollution](#) cause [crime](#)?
- How to operationalize [collective efficacy](#) and [social cohesion](#)?

Pennsylvania Horticultural Society



Place and Crime Recent Focus

- Center for Community Progress and the Michigan Youth Violence Prevention Center [insights on the national survey on greening](#)
- John Jay Research and Evaluation Center; [Reducing Violence Without Police](#) research review
 - 1st suggestion – Improve the Physical Environment
- [Can development be a crime prevention tool?](#)
- Biden Administration is focused on supporting [Community Violence Interventions](#). How do these fit into a broader community-based crime reduction model

Crime Prevention Through Environmental Design

Principles of CPTED

1. Surveillance
2. Access Control
3. Territoriality
 - 3a. *Image and Maintenance*
4. *Capable Guardianship*
 - 4a. *Policies and practice*

The Ultimate in CPTED Technology

Good for control...



...not so good for community life
(and there is still crime)



2nd Generation CPTED and SafeGrowth

Fitting CPTED into community context

- Not just creating sterile places but places for positive activity
- Recognizes legitimate uses or the reasons for uses we do not want
- Do I trust my neighbors? (Collective Efficacy)
- Am I a part of my neighborhood? (Social Cohesion)
- Do rules reflect my values? (Legitimacy)
- “Broken Windows” – fact and fiction



Renew The Avenue

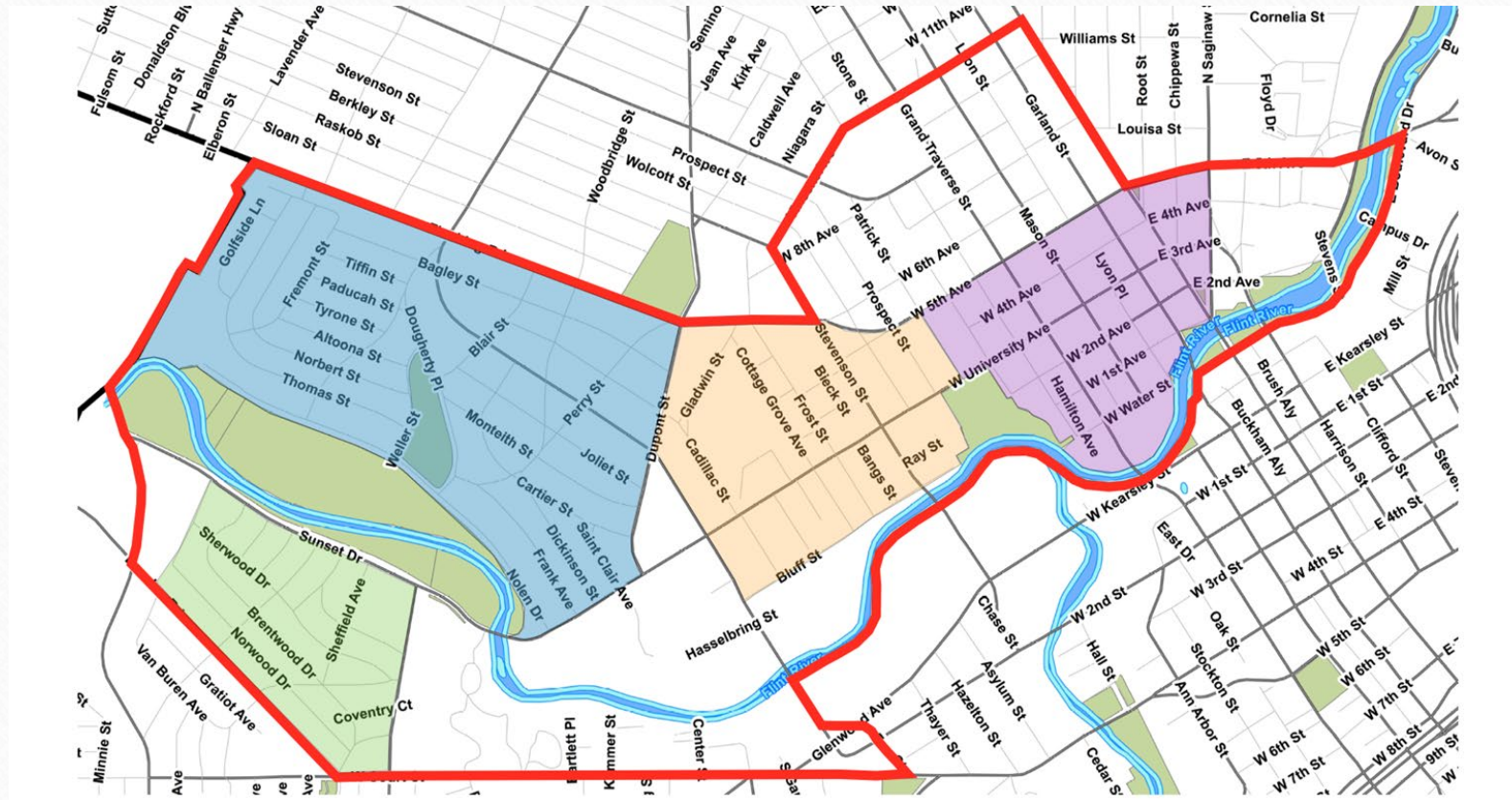
A Byrne Criminal Justice Innovation
Grant

October 1, 2014 - September 30, 2017

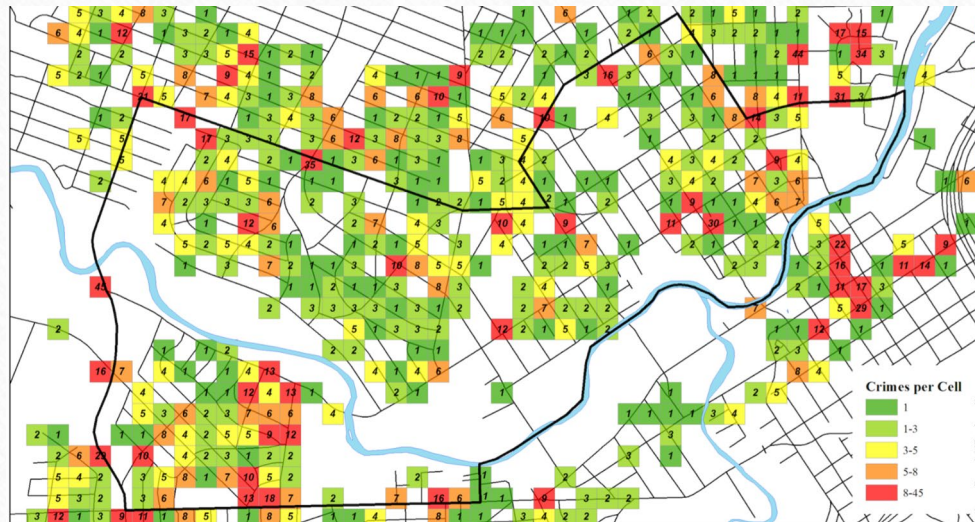
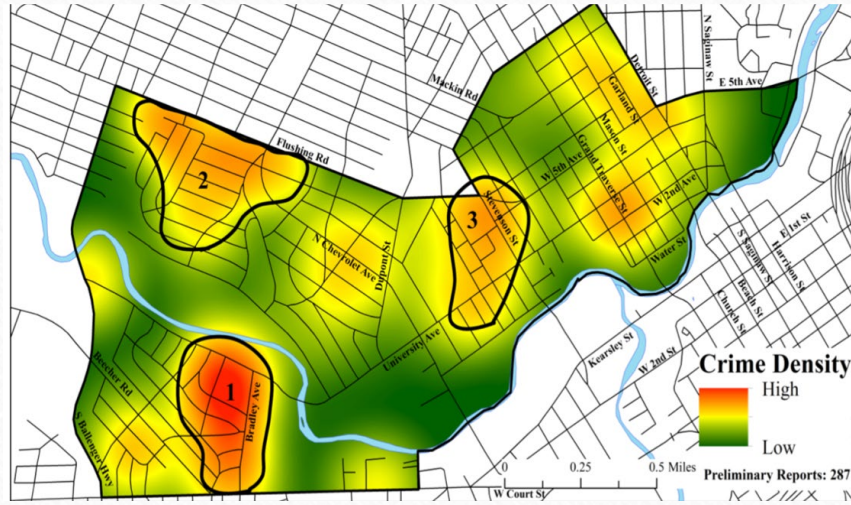
Our Goals:

- Reduce property crime, drug related crime, and assaults by 20%
- Reduce blight that facilitates crime by 50%
- Increase community participation at all levels

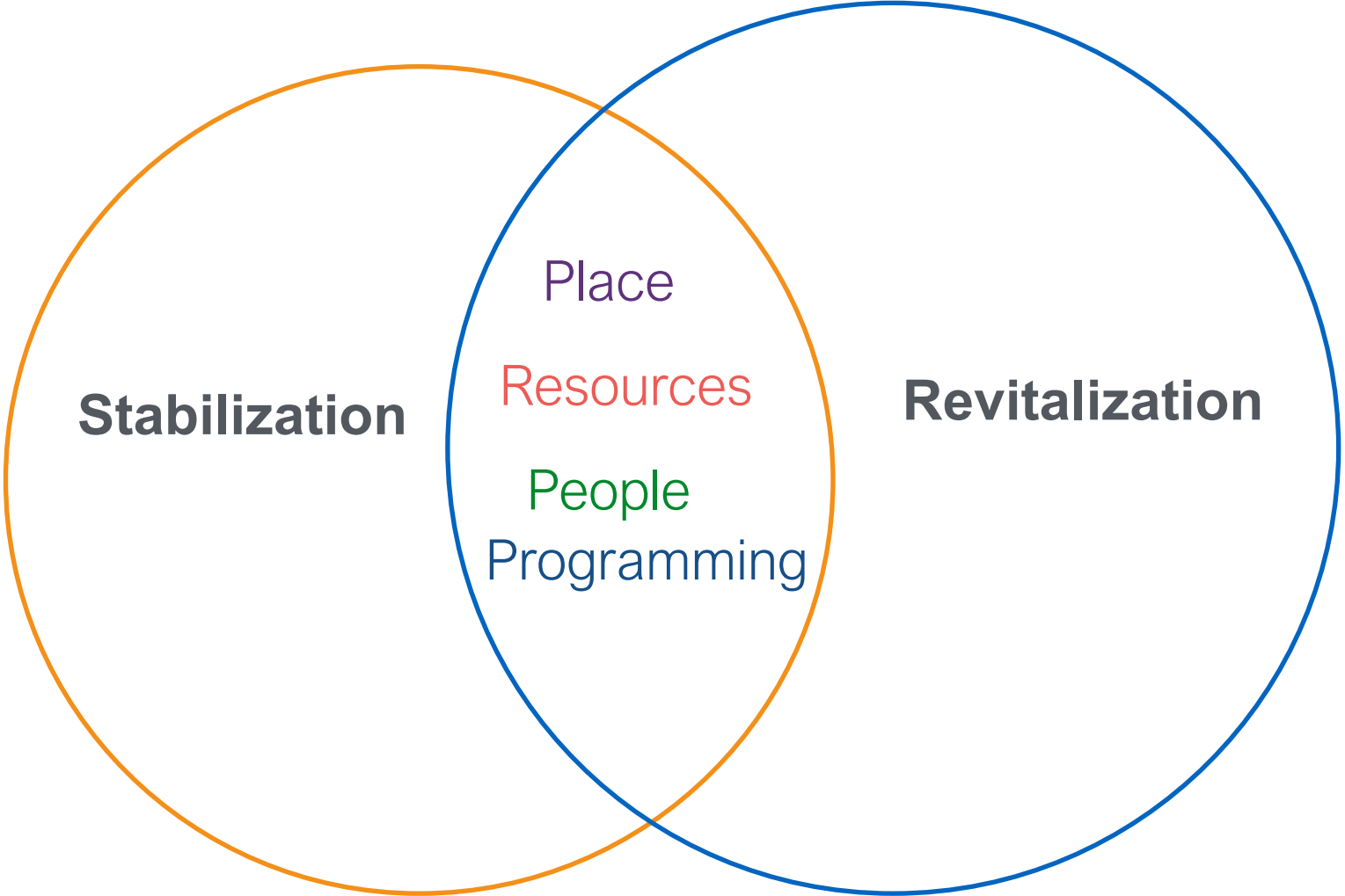
Focus Area



Crime Hotspots (1/14 - 3/15)

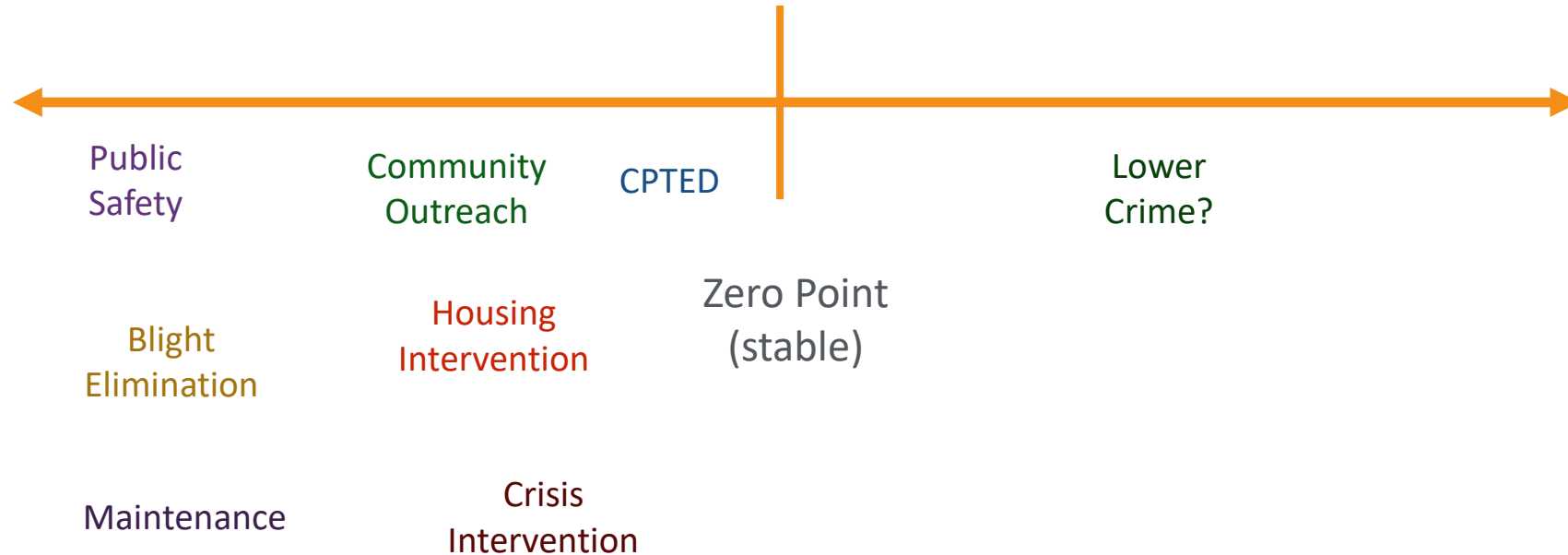


SUSTAINABILITY & THE FUTURE

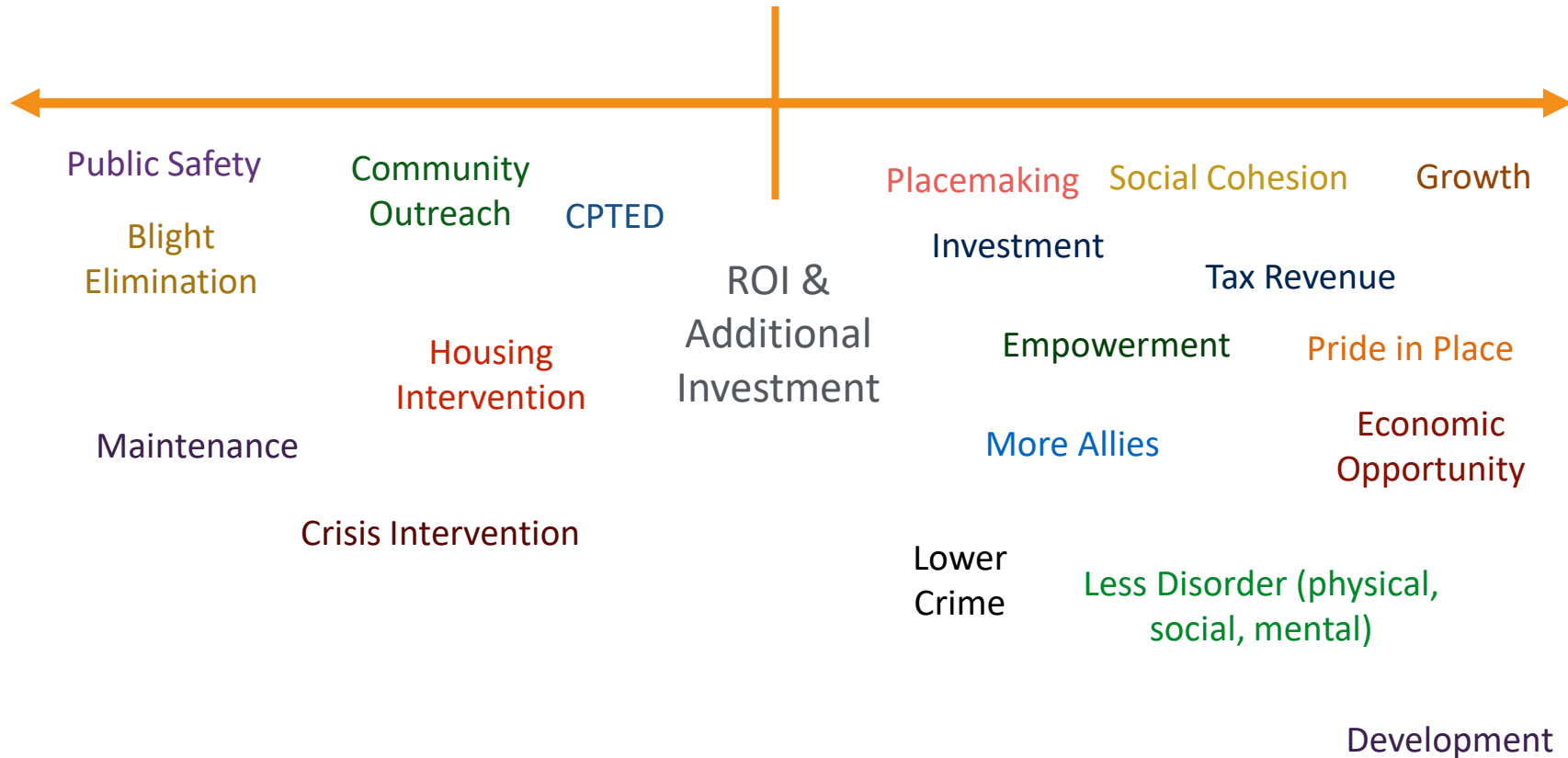


RETURN ON INVESTMENT

Investments require good data, good partners, and the ability to spot an opportunity. You and your partners must also look at past, present, and future at the same time.



RETURN ON INVESTMENT



Strategies:

- Crime Prevention Through Environmental Design (5)
- Placemaking (4)
- Resident Organizing (5)
- Drug Enforcement (2)
- Blight Elimination (3)
- Home Repair (1)
- Community Economic Development (3)
- School Safety (1)
- Directed Patrols (5)
- Technology (3)
- Community Engagement (4)
- Public Safety Partnerships (3)

Placemaking & Public Safety

Strengthening social and physical spaces in
communities using Tactical placemaking

“Cities have the capability of providing something for everybody, only because, and only when they are created by everybody.”

Jane Jacobs

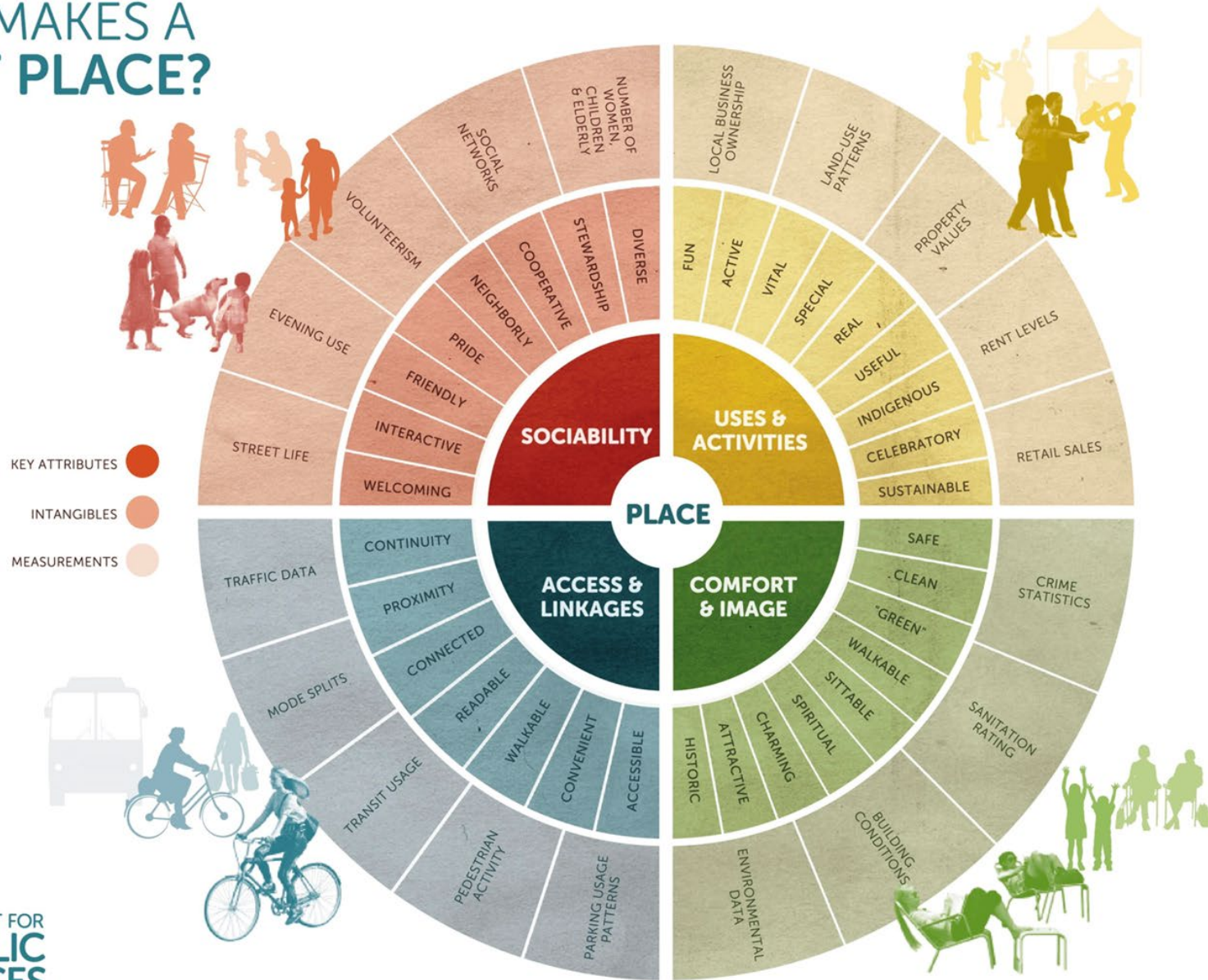
Placemaking

Defined

- Idea and a hands-on approach.
- Inspires people to collectively reimagine spaces.
- Maximizing our shared value of space.



WHAT MAKES A GREAT PLACE?



Tactical Placemaking

Tactical Urbanism & Lighter Quicker Cheaper

Tactical Placemaking

Different Types

- **Tactical Urbanism**
 - Dealing with problems with the environment
- **Guerilla Urbanism**
 - Raising awareness of an issue/possibly temporally fixing it
- **Lighter Quicker Cheaper**
 - Testing Ideas that may not be “problems” but might be enhancements



Durant Tuuri Mott Placemaking Meetings



Where? Durant Tuuri Mott Elementary School
When? Session #1 (Visioning) 11/2/15 @ 4:30pm
Session #2 (Planning) 11/9/15 @ 4:30pm

Durant Tuuri Mott Elementary School has a great open space that can be used for a number of recreation and community activities benefiting kids, families, and neighbors. What additional elements do you think the space needs? Children of all ages and adults are invited to help us examine, envision, and design a new site-plan.

Planning Contact: Tom Wyatt 810.762.9882 | twyatt@kettering.edu
Schools Contact: Chris Collins 810.760.1594 | ccollins@crim.org

Planning Your Activity

- Where?
- Why?
- When?
- Duration?
- Elements?
- Programming/Activation?
- Materials?
- Contingencies?
- Evaluation?
- Stewardship?

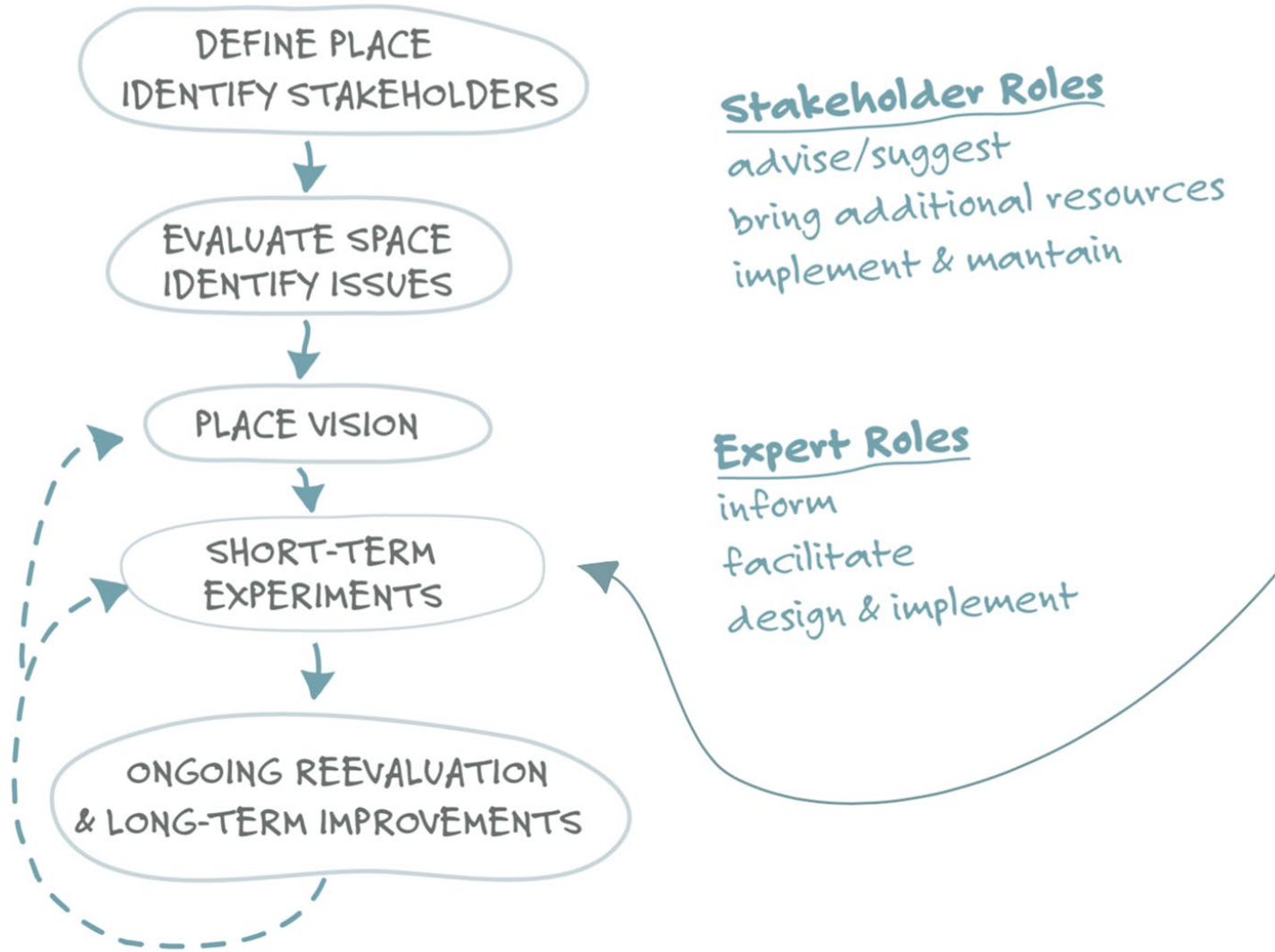
Tactical Placemaking

Why choose this strategy?

- **PROBLEM:** Physical improvements or activities are costly and/or decision-makers are reluctant to commit resources due to uncertain risks.
- **STRATEGIES:** Test various solutions using low-cost proxies to gauge the effectiveness and public support.
- **RESULTS:** Allows decision-makers can actually see the result and degree of support for various options before committing to permanent solutions.



Place Led, Community-Based Process



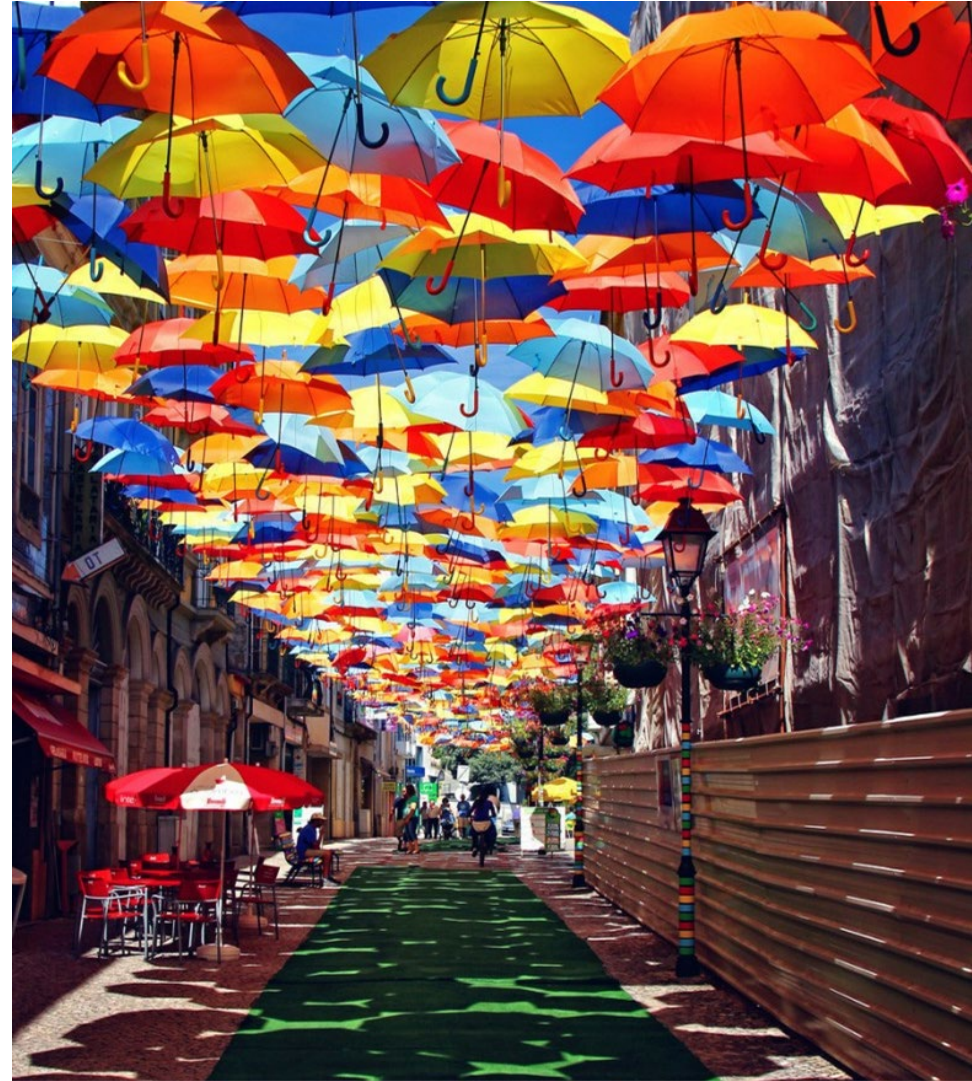
Access & Linkages

Is there a good connection between this place and adjacent buildings? Or, is it surrounded by blank walls, surface parking lots, windowless buildings, or any other elements that discourage people from entering the space?



Comfort & Image

Does the place make a good first impression?



Uses & Activities

Are people using the space, or is it empty?

How many different types of activities are occurring at one time—people walking, eating, playing baseball, chess, relaxing, reading?





RENEW THE AVENUE

A PUBLIC SAFETY INITIATIVE BY KETTERING UNIVERSITY &
THE UNIVERSITY AVENUE CORRIDOR COALITION



Sunset Village Block Party!

Celebrate the summer, Meet your neighbors, Help improve Sunset Village through a placemaking assessment

Food Truck:

Da Red Wagon
BBQ & Southern Cuisine



Lawn Games | Music | Placemaking

Where: Sunset Village Apartments - Inner Courtyard
Date: July 7 & 21 (Thursdays)
Time: 6:00pm - 8:00pm
Bring: your own lawn chair or picnic blanket

FREE Food for the first 100 people!
+ Chance to win 50% off your rent for August!

Contact: twyatt@kettering.edu | 810-726-9882
www.facebook.com/uacflint

Organized by:  Kettering UNIVERSITY



Bates College students install a protected bikeway demonstration project in Lewiston.



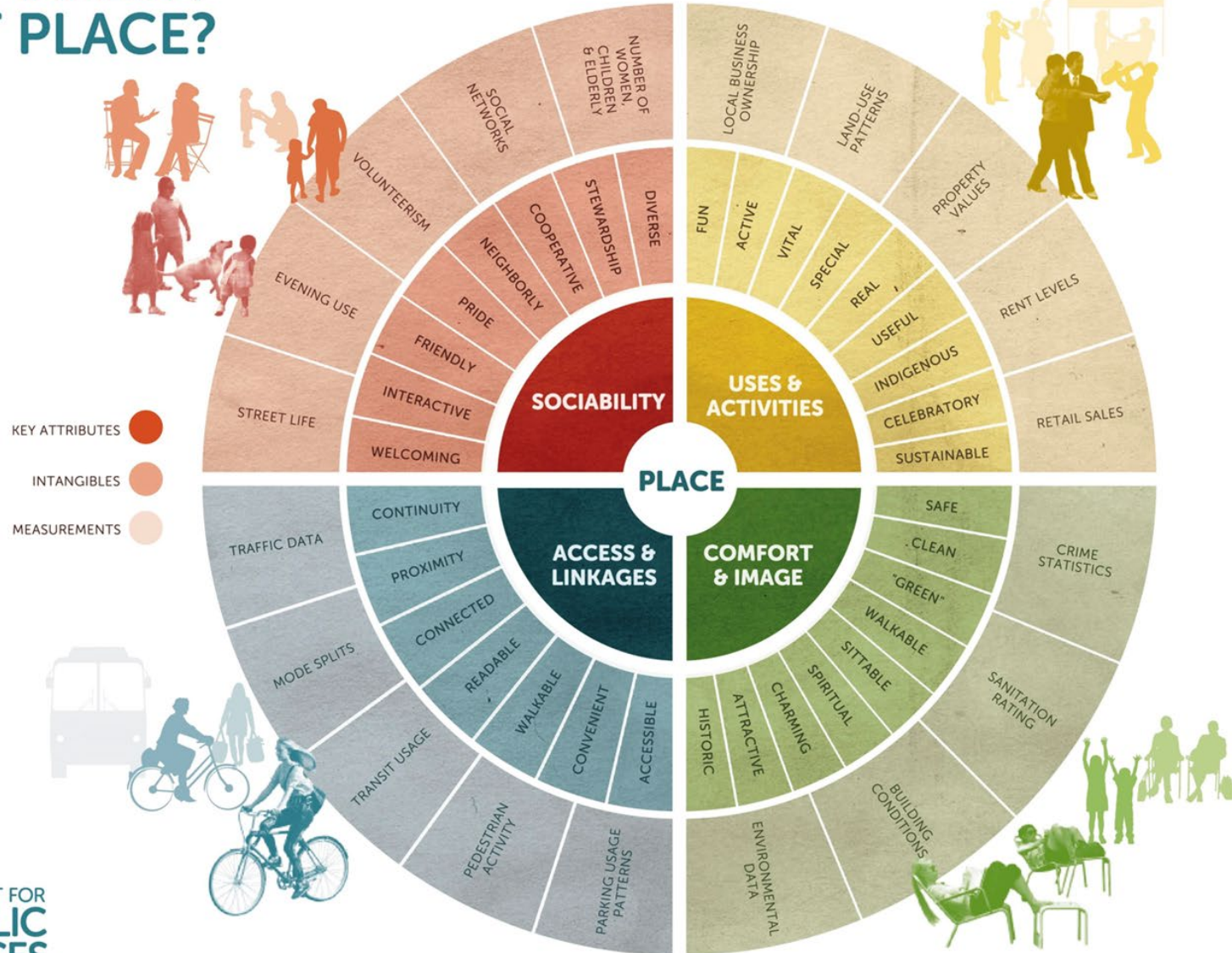
Sunset Village Apts.

A crime hotspot





WHAT MAKES A GREAT PLACE?



Rate The Place

Comfort & Image	Poor			Good
Overall Attractiveness	1	2	3	4
Feeling of Safety	1	2	3	4
Cleanliness/Quality of Maintenance	1	2	3	4
Comfort of Places to Sit	1	2	3	4
Comments/Notes:				

Access & Linkages	Poor			Good
Visibility From a Distance	1	2	3	4
Ease in Walking to the Place	1	2	3	4
Transit Access	1	2	3	4
Clarity of Information/Signage	1	2	3	4
Comments/Notes:				

Rate The Place (continued)

Uses & Activities	Poor			Good
Mix of Services	1	2	3	4
Frequency of Community Events/Activities	1	2	3	4
Overall Busy-ness of Area	1	2	3	4
Economic Vitality	1	2	3	4
Comments/Notes:				

Sociability	Poor			Good
Number of People in Groups	1	2	3	4
Evidence of Volunteerism	1	2	3	4
Sense of Pride & Ownership	1	2	3	4
Presence of Children & Seniors	1	2	3	4
Comments/Notes:				

Rate The Place

A Hands-On Activity

- Individual Reflection
 - Of the new ideas that were listed, what elements would you incorporate?
 - How would you design the flow? What would you put where?



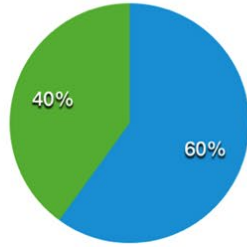


Comfort & Image

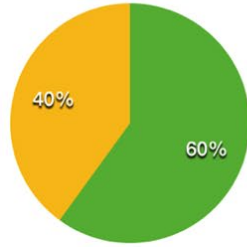
Access & Linkages

Sunset Village Placemaking

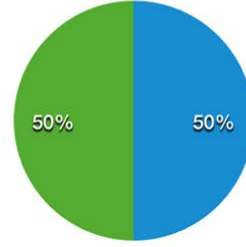
Overall Attractiveness



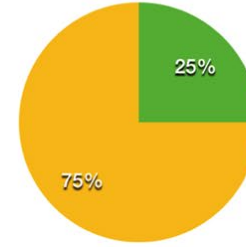
Feeling of Safety



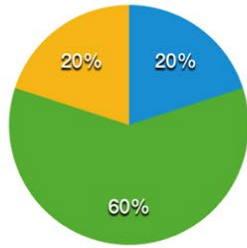
Visibility from a Distance



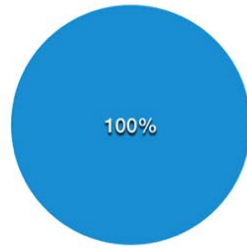
Walkability to Place



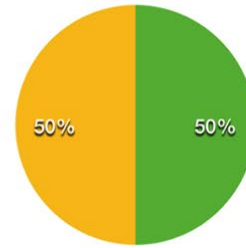
Cleanliness / Quality of Maintenance



Comfort of Places to Sit



Clarity of Info / Signage



● Poor

● Fair

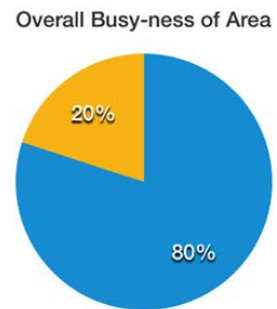
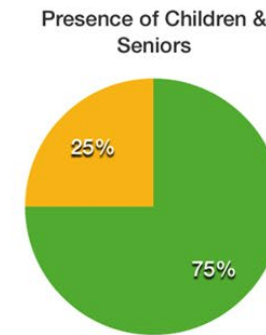
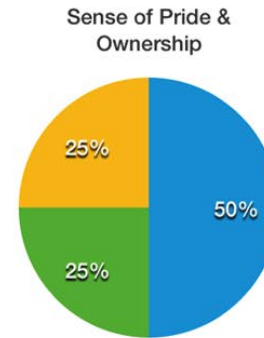
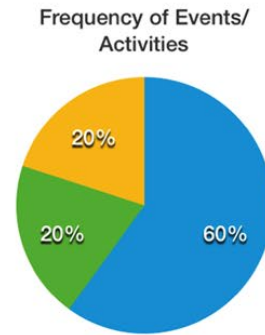
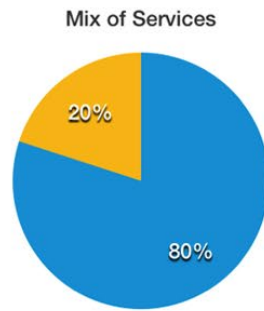
● Average

● Good

Uses & Activities

Sociability

Sunset Village Placemaking

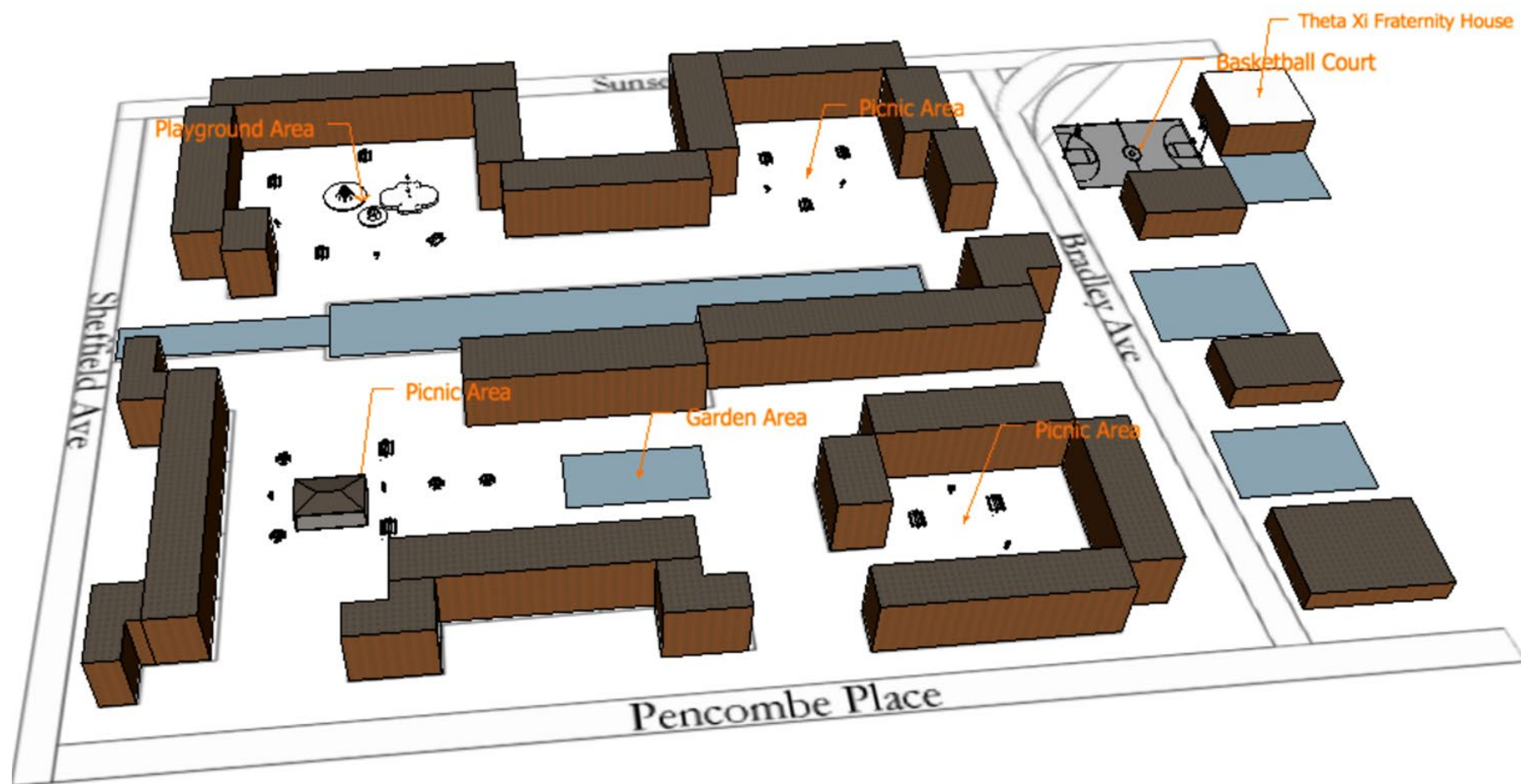


Rate The Place

Priorities

1. Trash Cans
2. Basketball Court
3. Additional Seating
4. Improve Bus Stop Areas
5. Additional Lighting
6. Landscaping/Picnic Areas/Food Gardens/Playground
7. Built In Grills
8. Laundry Rooms
9. Pavilion/Toddler Area
10. Signage/Painting/Common Space/Bike Racks

SUNSET VILLAGE (DRAFT) PLACEMAKING PLAN

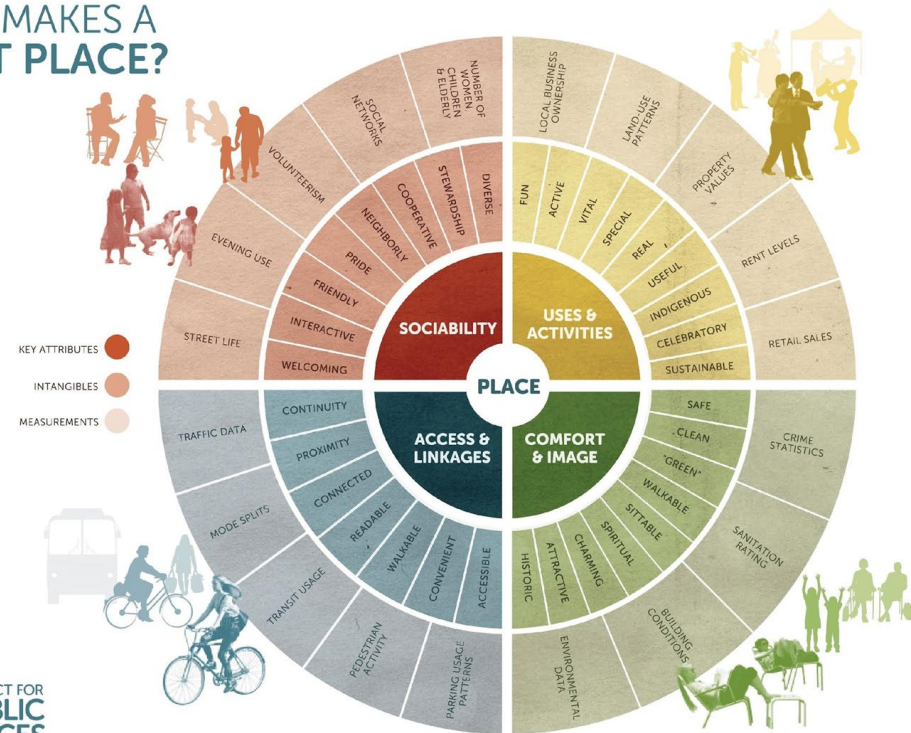


Tactical Placemaking

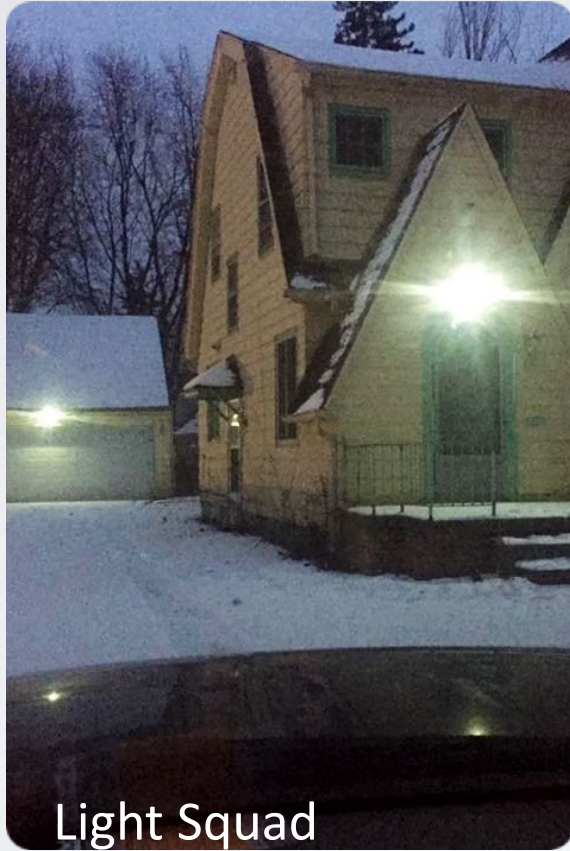
Additional BCJI Strategies

- Pop-up restaurants
- Public art installations
- Pop-up markets
- Food truck Fridays
- Pop-up water park
- Holiday lighting contest
- Pocket parks

WHAT MAKES A GREAT PLACE?



Blight Elimination



Light Squad



Blight Squad

Crime Prevention

**STEVENSON NEIGHBORHOOD
BIKE PATROL**

Do you want to help your community?

Do you want to be active & healthy?

Do you like riding a bike?

Do you want to have a safer community?

You Should Join Stevenson Neighborhood Bike Patrol!

DATES, TIMES, AND LOCATIONS WILL BE ANNOUNCED EACH WEEK ON OUR FACEBOOK PAGE

 Like us on Facebook @ www.facebook.com/FlintUSC


Contact us with Questions
Email: FlintUSC@gmail.com
Phone: 810-624-2609



River Trail Watchers



Community Participation

The University Avenue Corridor Coalition
Monthly Meeting



14 November

Lunch / Learn / Discussion Format
Time: 12:00 PM - 1:30 PM
Location: Carriage Town Ministries - 605 Garland St.

Hear 3 minute updates from:

- UM-Flint EDA Center for Community & Economic Development
- Workforce Development (M.A.D.E. Institute)
- South Flint Community Plan (City of Flint)
- Autonomous Mobility Research Center (Kettering University)
- Economic Development Initiatives (Flint & Genesee Chamber of Commerce)
- Business Development (MI-SBDC)
- Community Health (Genesee Health System)
- Flint Gigabit Tech Initiative (Factory Two)
- Lead Safe Homes Program (DHHS)

3 Minute Guest Updates
 Q & A
 Networking & Announcements
 Lunch is on us!

+810-762-9882
 @twyatt@kettering.edu

Flint, MI, 48504
 facebook.com/uacflint

5-Year Celebration / Annual Meeting



Collaborative Planning & Problem Solving

Community Participation

A BLOCK PARTY & COMPLETE STREETS DEMO

Better Block Grand Traverse

FREE EVENT
Saturday, Sept. 30
10am - 4 pm
Grand Traverse & University



ENJOY MUSIC, ART, POP UP
SHOPS, FOOD TRUCKS AND MORE!
BRING LIFE TO VACANT SPACE IN YOUR NEIGHBORHOOD.

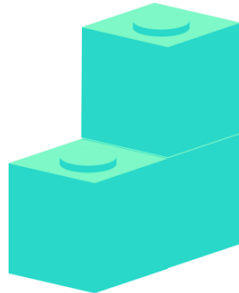
   

Advocate & Inform

Bottom Up Approach
to Planning

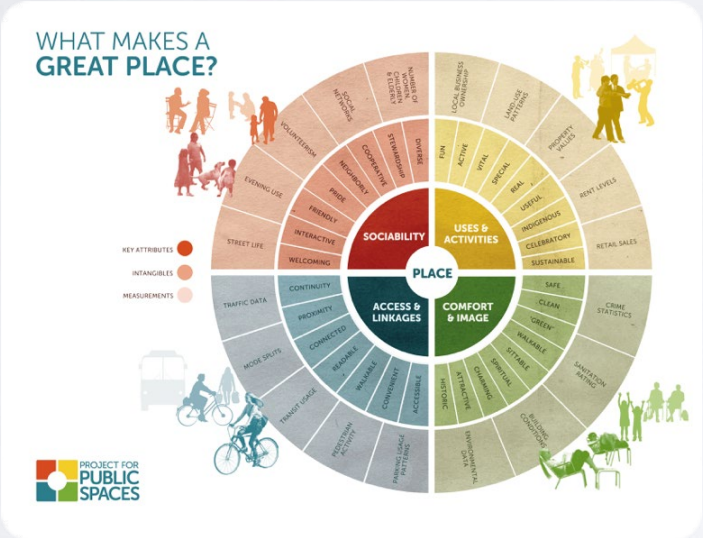


Community Participation



CPTED LABS

**BY KETTERING UNIVERSITY*
CHANGING THE PHYSICAL
& SOCIAL ENVIRONMENT
OF PLACES



Inclusive



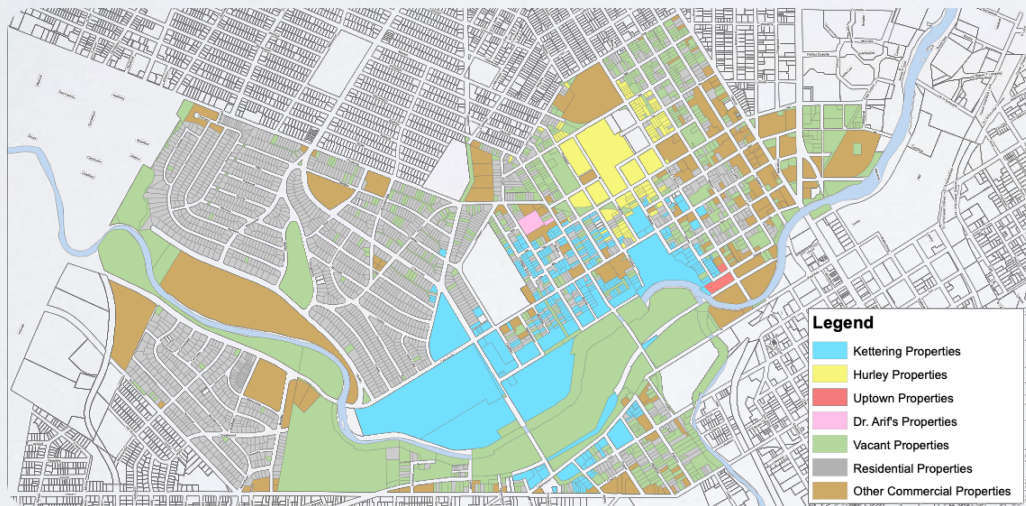
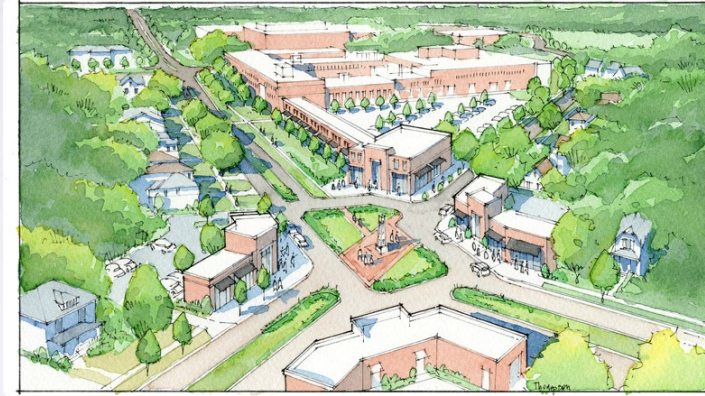
Training

Empowerment

Real Estate & Wealth Building

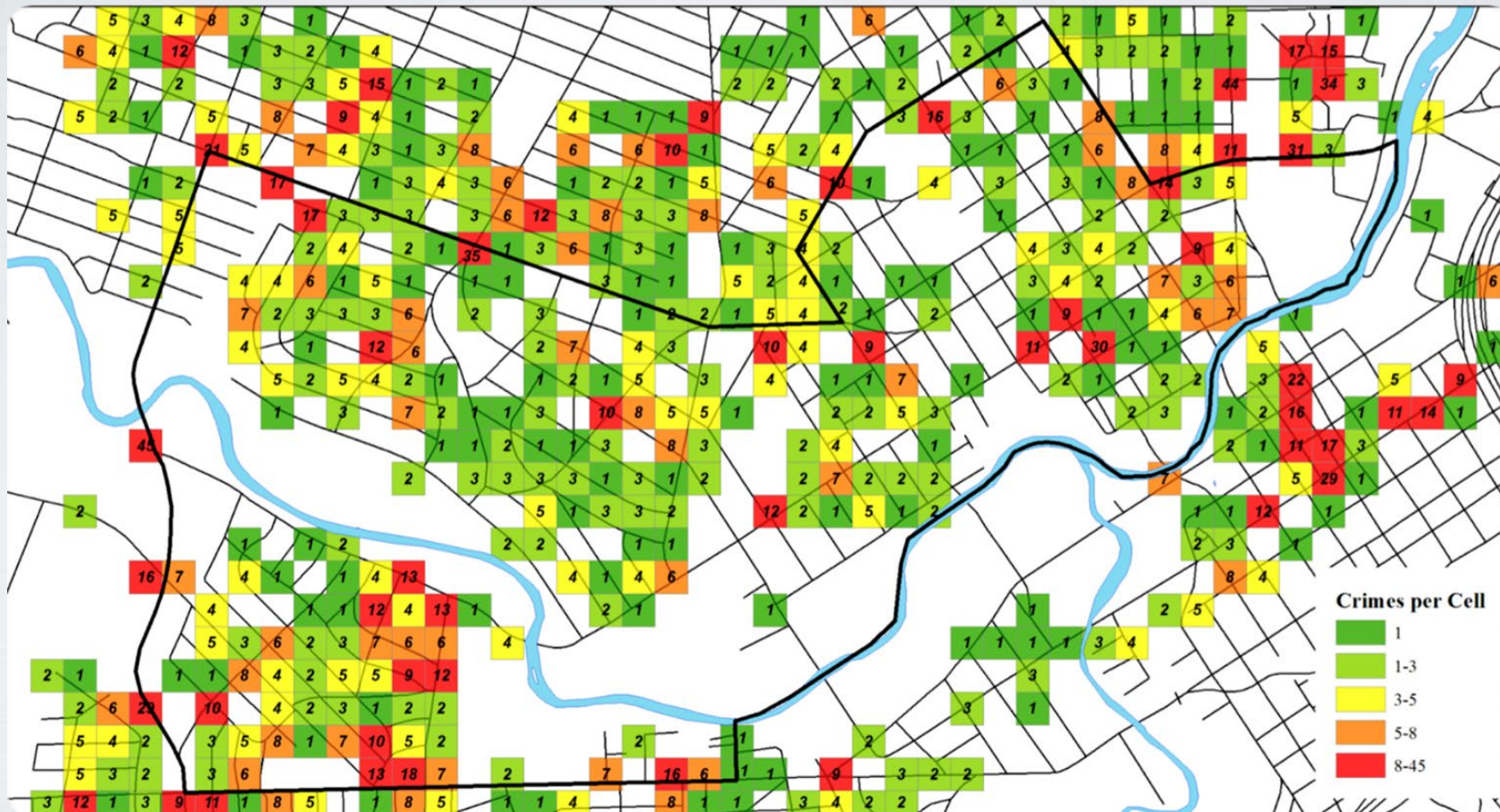


Revitalization is an Incremental Process



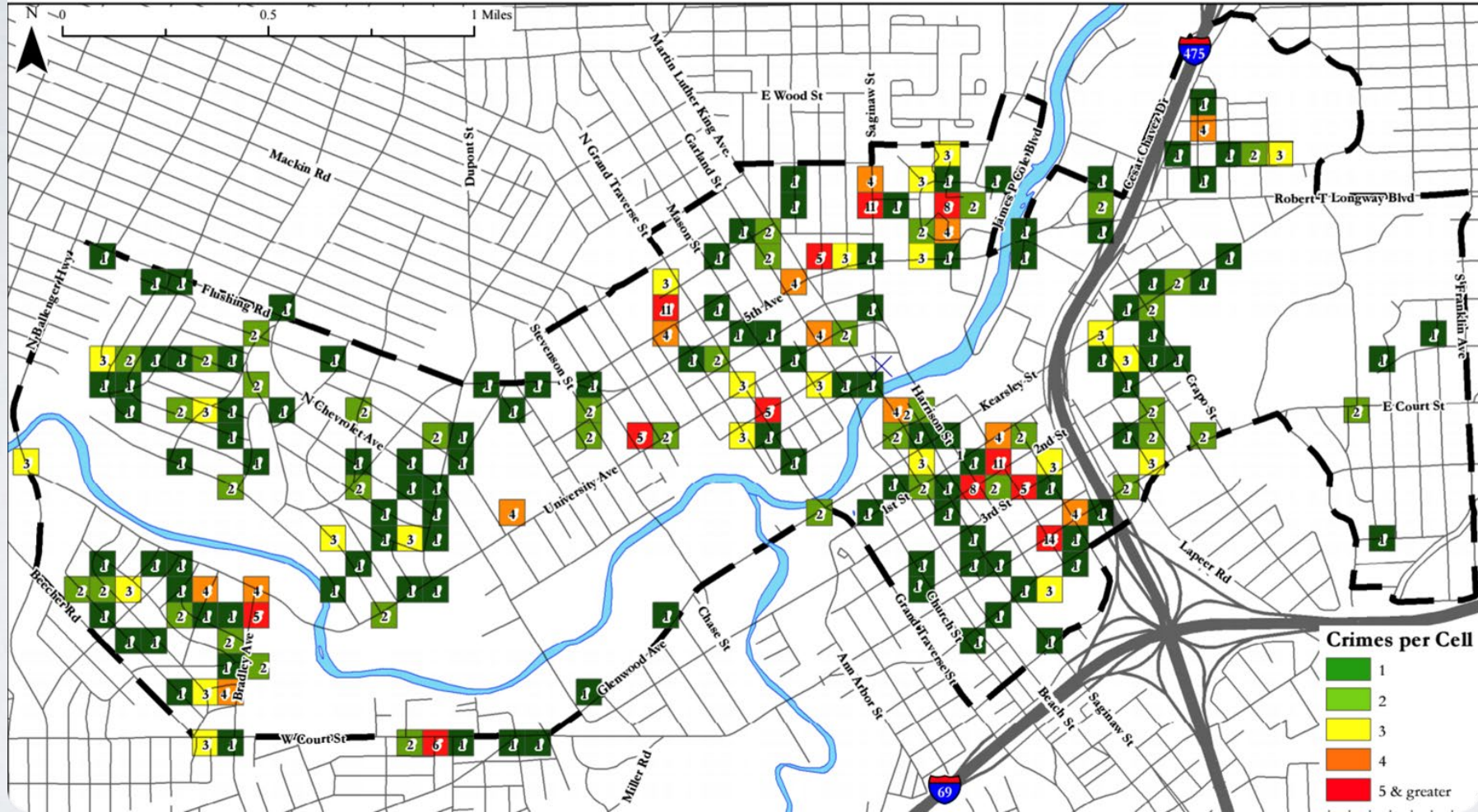
NOV 30 Habitat for Humanity Live/Work SOUP
Public · Hosted by Flint SOUP and Genesee County Habitat for Humanity

January 2014 - March 2015



February 2016 - July 2016

GEOGRAPHIC INFORMATION
SYSTEMS CENTER





DECREASE

Poor, Substandard, and
Blighted Properties



INCREASE

UACC Attendance and
Activity Participation



INVESTMENT

Development, Improvement,
Education, Recreation, and
Health



DECREASE

Assaults
(2013 - 2017)



DECREASE

Robberies
(2013 - 2017)



DECREASE

Burglary
(2013 - 2017)



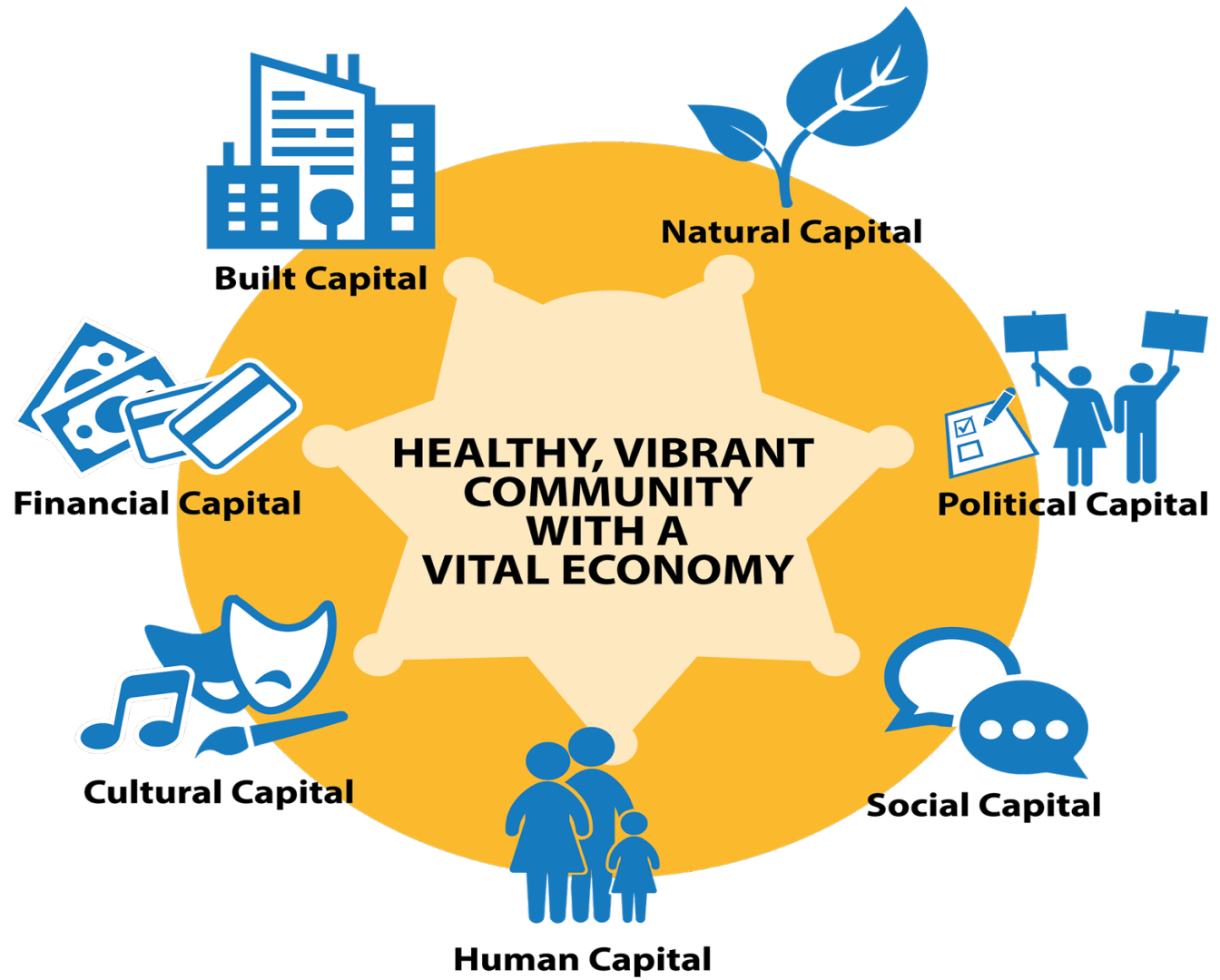
DECREASE

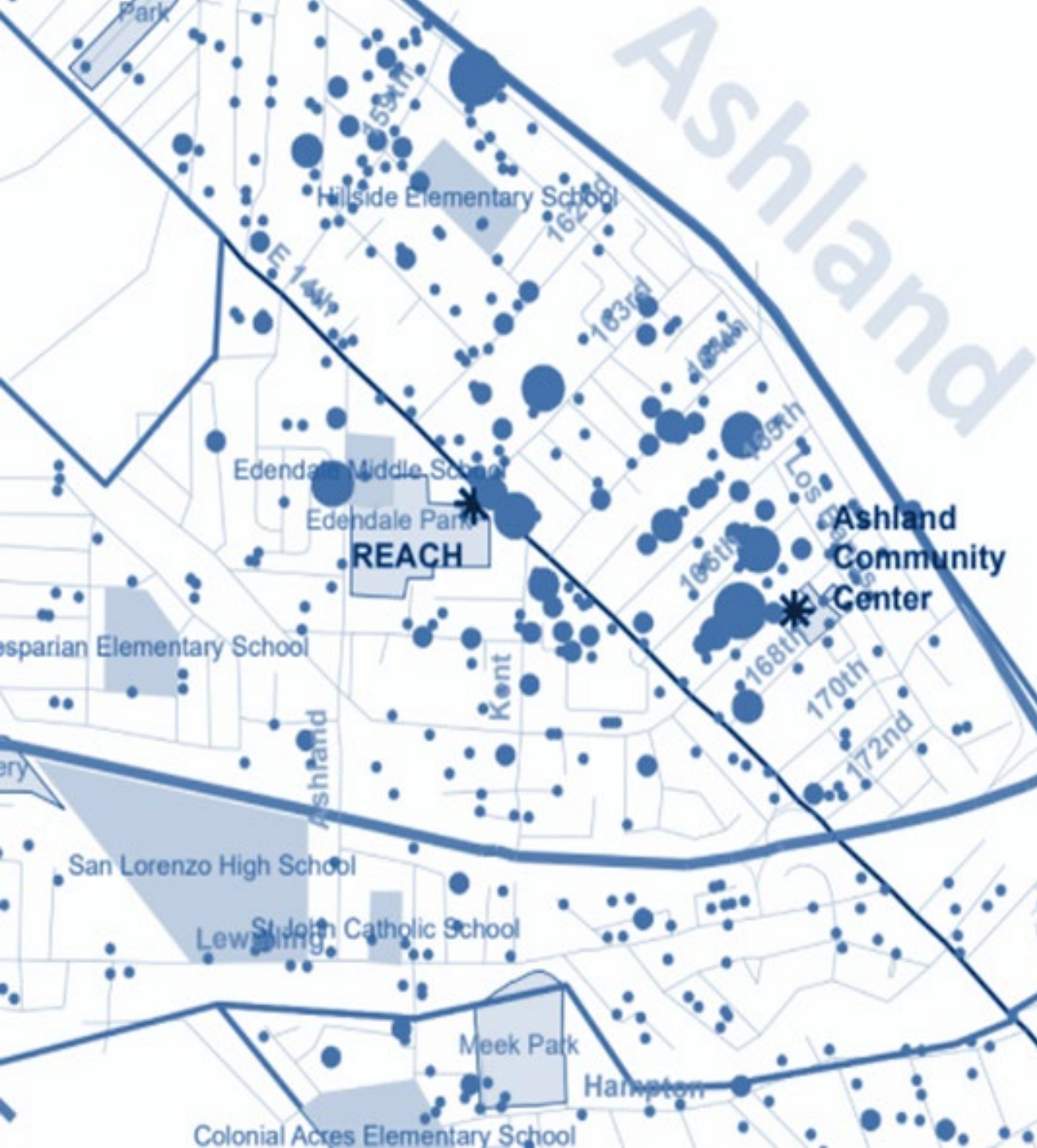
Vandalism
(2013 - 2017)

Community Capitals Policing

Investing in place

Seven Kinds of Capital















JOIN US!
**The Middle Neighborhoods
Community of Practice
(CoP)**

The Middle Neighborhoods CoP is an informal, facilitated network of practitioners, researchers and policymakers engaged in revitalizing middle neighborhoods. CoP members share learnings through topical webinars, referrals, site visits, phone calls, and occasional larger group events.

There are currently more than 800 people in the CoP. Please join us!

middleneighborhoods.org



Upcoming Webinars

- **AUG 24:** Engagement Chat - strategies for supporting safety initiatives through community engagement
- **SEPT 13:** Strategies to Address Institutional Investors in Middle Neighborhoods (12:00 PM)

Subscribe

Center for Community Progress

Check out: The Cornerstone Webinar Series

Thank you for
joining us!

Please email us if you have ideas for webinars, case studies, news stories, etc.

Tell us about your experience today!